



CAT[®]

CAT[®]
WORKWEAR

ITALY
2023

CATERPILLAR[®]

Gartner
TRADE

CAT® WORKWEAR

FOR OVER 100 YEARS, CATERPILLAR INC. HAS BEEN MAKING SUSTAINABLE PROGRESS POSSIBLE AND WILL CONTINUE TO SUCCEED IN THE FUTURE. DEFINED BY ITS INTEGRITY, EXCELLENCE, TEAMWORK, COMMITMENT AND SUSTAINABILITY, CATERPILLAR HAS USED THESE VALUES TO SUCCEED IN THE PAST AND WILL CONTINUE SUCCESS IN THE FUTURE.

CAT® WORKWEAR INCORPORATES THESE CATERPILLAR VALUES AND REDEFINES THEM FOR THE MODERN WORKER'S WARDROBE WITH LASTING PERFORMANCE, UNPARALLELED QUALITY AND TECHNICAL INNOVATION. WE TAKE THE INDUSTRY-WIDE STANDARDS OF SAFETY AND DURABILITY AND IMPROVE THEM WITH INCREASED COMFORT, IMPROVED FIT AND INNOVATIVE TECHNOLOGICAL ENGINEERING. OUR WORKWEAR IS TECHNICAL AND DESIGNED TO MEET ALL YOUR NEEDS HEAD ON, IN ALL CONDITIONS AND SITUATIONS. WHETHER ON OR OFF THE JOB SITE, CAT WORKWEAR WILL PERFORM WHEN YOU NEED IT THE MOST. WITH A HERITAGE LIKE OURS, YOU KNOW WE MEAN BUSINESS.

CORE VALUES

WE VALUE OUR **GENUINE** HERITAGE AS AN AMERICAN COMPANY THAT HAS GROWN TO BECOME A GLOBAL ICON.

WE VALUE OUR **FUNCTIONAL** DESIGNS STRENGTHENED BY INNOVATION, RELEVANCE AND PERFORMANCE.

WE VALUE OUR **COMFORTABLE** CLOTHES CREATED WITH DYNAMIC FABRICATIONS AND BUILT WITH GREAT FIT AND DETAIL.

WE VALUE OUR **VERSATILE** SELECTION OF UNRIVALED FITS, FABRICS, COLORS, DETAILS AND STYLES.

TECHNICAL FEATURES GUIDE



STORM BLOCKER PLUS™

Waterproof, windproof, breathable and seam taped technology for ultimate protection against the elements.



STORM BLOCKER™

Water resistant, wind resistant and breathable performance features to keep you comfortable.



WATERPROOF

A combination of waterproof fabrics and seam taped construction for ultimate protection in wet conditions.



WATER RESISTANT

Fabrics treated to repel water, creating a barrier between you and moisture.



WINDPROOF

Advanced fabric that stops wind from penetrating the material, keeping you warm in a wide range of weather conditions.



WIND RESISTANT

Reduces wind chill in breezy weather, while still allowing for breathability and comfort.



SEAM TAPED

Application of seam tape to all stitch lines ensuring an air tight seal between you and the elements, while also adding strength and longevity to your apparel.



INSULATED

A garment with added layers of cold blocking material, keeping you warmer longer.



REMOVABLE HOOD (SNAP)

Easily detachable hood, allowing for greater versatility and range of wear.



REMOVABLE HOOD (ZIP)

Easily detachable hood, allowing for greater versatility and range of wear.



THUMB HOLE

Opening in sleeve cuff that allows you to keep your hands warm and sleeves in place while still offering freedom of movement.



STRETCH

Fabric built with stretch to allow for maximum mobility.



KNEE PAD POCKET

Built in pocket to hold removable knee pads, saving your knees from undue stress.



KNIFE POCKET

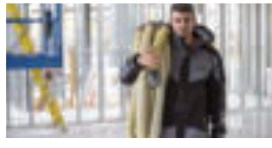
Purposefully placed pocket to keep a blade or box cutter close at hand.

CORE FOCUS GROUPS



GENERAL WORKER

- > CONSTRUCTION
- > FACTORY
- > MAINTENANCE
- > WAREHOUSE
- > DELIVERIES
- > DOCKING
- > DIY



SKILLED TRADES

- > ELECTRICAL
- > CARPENTRY
- > MASONRY
- > FLOORING
- > PLUMBING
- > ENGINEERING
- > TRUCKING
- > EQUIPMENT OPERATION
- > ROOFING



AGRICULTURAL TRADES

- > FARMING
- > LANDSCAPING
- > GARDENING
- > FORESTRY



PERSONAL PROTECTIVE EQUIPMENT

- > OIL & GAS
- > CONSTRUCTION
- > MINING
- > AIRPORT
- > MANUFACTURING
- > WAREHOUSE
- > ELECTRICAL
- > UTILITY



BREATHABLE

Fabric that allows air to move freely and sweat to evaporate quickly, keeping you cool and dry.



MOISTURE CONTROL

Fabric designed to transfer moisture away from the body onto the exterior of the fabric, keeping you dry and comfortable.



ANTI ODOR

ANTI ODOR

Fabric engineered to combat odor causing bacteria.



STAIN RESISTANT

Fabrics treated to resist stains, keeping your garment looking newer longer.



QUICK DRY

Performance fabric that breathes well, wicks moisture away from the body and transports it to the outside of the garment to quickly dry through evaporation.



DROP TAIL HEM

Curved, drop tail hem for increased coverage of lower back area.



ULTRAVIOLET PROTECTION

Material blocks UVA and UVB rays to help prevent sunburn and long term skin damage.



REFLECTIVE

Highly luminous material in low light conditions, ensuring you are safe and seen.



S3 CORD MANAGEMENT

Smart. Safe. Secure. Built in drawcord system to re-route drawstrings from the exterior to the interior of a sweatshirt for increased safety.



WIRE MANAGEMENT

Built in wire management system to keep headphone wires secure and out of the way for increased safety.



CELL PHONE POCKET

Built in pocket to keep cell phones secure, protected and within reach.





555 Yellow-Black

1510305 TM LOGO TEE

Fabric Content:

- 6 oz. (200 gsm) 100% ringspun cotton
- 6 oz. (200 gsm) 60% cotton / 40% poly (Heather Colorways)

Features:

- Rib elastane collar for shape retention
- Cat Yellow jersey necktape
- Tagless back neck for comfort
- Center chest logo graphic
- Logo label at sleeve



001
Heather Grey



016
Black



12369
Chive



11768
Bronze



382
Navy



004 Dark
Heather Grey

	S	M	L	XL	2XL
INTERNATIONAL	▪	▪	▪	▪	▪





12967 Hot Red-Eclipse

W05324 TRADEMARK TEE

Fabric Content:

- 6 oz. (200 gsm) 100% ringspun cotton
- 6 oz. (200 gsm) 60% cotton / 40% poly (Heather Colorways)

Features:

- Rib elastane collar and cuffs for shape retention
- Cat Yellow jersey necktape
- Tagless back neck for comfort
- Left chest and center back logo graphic
- Logo label at sleeve



12968 Eclipse-Charcoal

555 Eclipse-Black

016 Eclipse-Black

	S	M	L	XL	2XL
INTERNATIONAL	▪	▪	▪	▪	▪



10158 Black

1510590 ESSENTIALS S/ STEE

Fabric Content:

- Jersey, 100% Cotton, 5.3oz (180GSM)

Features:

- Logo Label at Left Sleeve Hem
- Tagless Back Neck



10959 Marshland



10564 Navy



10937 Yellow

NEW COLOR

	S	M	L	XL	2XL
INTERNATIONAL	▪	▪	▪	▪	▪



12130 Hi-VisYellow

NEW COLOR

1510576-INT COOLMAX S/ STEE

Fabric Content:

- Coolmax® Jersey, Birds Eye Back, 100% Polyester, 5.0oz (170GSM)

Features:

- Back Shoulder Logo Graphic
- Tagless Back Neck
- Logo Label at Front Hem
- SNAG FREE



**SOLAR
BLOCKER™**



MOISTURE CONTROL



BREATHABLE



10158 Black

	S	M	L	XL	2XL
INTERNATIONAL	▪	▪	▪	▪	▪

NEW



12669 Magnet

1010022 CATERPILLAR POWER TEE

Fabric Content:

- Jersey 100%, Cotton, 5.3oz (180GSM)

Features:

- Caterpillar Center Front Graphic
- Logo Label on Left Sleeve Hem
- Tagless Back Neck



10118 Detroit Blue

	S	M	L	XL	2XL
INTERNATIONAL	▪	▪	▪	▪	▪

NEW



12369 Chive

1010030 RETRO LOGO TEE

Fabric Content:

- Jersey 100%, Cotton, 5.3oz (180GSM)

Features:

- Caterpillar Center Front Graphic Print
- Logo Label on Left Sleeve Hem
- Tagless Back Neck



12669 Magnet

	S	M	L	XL	2XL
INTERNATIONAL	▪	▪	▪	▪	▪



10158 Black

1620023 ESSENTIALS POLO

Fabric Content:

- 5.9 oz. (200 gsm), 100% cotton pique

Features:

- Silicone logo label at left sleeve hem
- 3 button front placket
- Sideseam vent for additional mobility
- Rib knit collar and cuffs for shape retention
- Double needle stitching for increased durability



10123
Dark Heather Grey

	S	M	L	XL	2XL
INTERNATIONAL	▪	▪	▪	▪	▪



10158 Black

1620027-INT

TECH COOLMAX POLO

EMBROIDERY
FRIENDLY

Fabric Content:

- Coolmax® Jersey, Birds Eye Back, 100% Polyester, 5.0oz (170GSM)

Features:

- Logo Print at Right Sleeve Hem
- Full Needle Rib Knit Collar
- Three Button Placket
- Vents at Sideseam
- Tagless Back Neck
- SNAG FREE



SOLAR
BLOCKER™



UPF 30+



MOISTURE CONTROL



BREATHABLE



12669 Magnet

	S	M	L	XL	2XL
INTERNATIONAL	▪	▪	▪	▪	▪



17-1663 Bittersweet

1020005 PLAID S/S WORK SHIRT

Fabric Content:

- Oxford, 99% Cotton, 1% Spandex, 4.5oz (150GSM)

Features:

- Logo Label at Left Chest Pocket
- Two Chest Pockets with Button Flap Closure
- Pencil Slot at Left Chest Pocket
- Hidden Microfiber Lens Cloth Inside Front Hem
- Tagless Back Neck



17-4023 Blue Breeze



18-1354 Burnt Ochre

	M	L	XL	2XL
INTERNATIONAL	▪	▪	▪	▪



10378
Dark Marine

1510034 TRADEMARK BANNER L/S TEE

Fabric Content:

- 6 oz. (200 gsm) 100% ringspun cotton
- 6 oz. (200 gsm) 60% cotton / 40% poly (Heather Colorways)

Features:

- Rib elastane collar and cuffs for shape retention
- Left chest and right sleeve logo graphic
- Cat Yellow jersey necktape
- Tagless back neck for comfort



555
Yellow



016
Black

	M	L	XL	2XL
INTERNATIONAL	■	■	■	■



CAT
DIESEL POWER

CATERPILLAR

H20



12968
Eclipse-Charcoal



W10840 FULL ZIP HOODED SWEATSHIRT

Fabric Content:

- 10.6 oz. (360 gsm), 70% cotton / 30% polyester fleece

Features:

- Full front zip
- S3 cord management system
- Logo graphic at sleeve and left chest
- Front reach in pockets
- Rib elastane waistband and cuffs for shape retention
- Cat Yellow jersey necktape
- Tagless back neck for comfort



016 Black



004 Dark



555 Yellow



10960
Memphis Blue



10831
Light Heather Grey

	S	M	L	XL	2XL
INTERNATIONAL	▪	▪	▪	▪	▪



12882 Yellow-Black



S3 CORD MANAGEMENT

W10646 TRADEMARK HOODED SWEATSHIRT

Fabric Content:

- 10.6 oz. (360gsm), 70% cotton / 30% polyester fleece

Features:

- S3 cord management system
- Embroidered logo at center chest
- Front pouch pocket
- Rib elastane waistband and cuffs for shape retention
- Cat Yellow jersey necktape
- Tagless back neck for comfort



004 Dark
Heather Grey



016 Black

	S	M	L	XL	2XL
INTERNATIONAL	▪	▪	▪	▪	▪



10158 Black

1910161 LOOPBACK PULLOVER HOODIE

Fabric Content:

- Loop Back French Terry: 8.3 oz. (280 gsm), 60% Cotton / 40% Polyester

Features:

- Utility pouch pocket
- Reach in hand warmer pockets
- Logo print on hood
- Tagless back neck

	M	L	XL	2XL
INTERNATIONAL	■	■	■	■



10123 Dark Heather Grey

1910156 ESSENTIAL CREWNECK SWEATSHIRT

Fabric Content:

- Self: 8.9 oz. (300 gsm), 65% polyester / 35% cotton sweatshirt fleece
- Contrast: 250T, 100% nylon taslan

Features:

- Silicone logo label at left arm
- Abrasion resistant nylon shoulder overlays
- Rib knit waistband and cuffs for shape retention



10158 Black

	M	L	XL	2XL
INTERNATIONAL	■	■	■	■



11790 Night Camo

NEW COLOR

1310150-INT

ESSENTIAL RAIN JACKET

Fabric Content:

- Lightweight Softshell, 92% Polyester, 8% Spandex, 4.9oz (165GSM)

Features:

- Logo Label on Left Bicep
- Stormblocker Plus Logo at Right Sleeve
- Dual Layer Storm Flaps at Center Front
- Lower Drop-in Zip Closure Pockets
- Adjustable Cord Locks at Hem
- Adjustable Hood with Elastic Cord and Cord Locks
- Two Interior Drop-in Pockets

	M	L	XL	2XL
INTERNATIONAL	▪	▪	▪	▪



10158 Black



**STORM
BLOCKER™**



WATERPROOF



WINDPROOF



BREATHABLE



SEAM SEALED





12195 Black-Black

Disponibile da
Settembre 2023



S3 CORD
MANAGEMENT

REFLECTIVE

1910159 TRADE FZ SWEATSHIRT

Fabric Content:

- Self: 8.9 oz. (300 gsm) 65% polyester / 35% cotton sweatshirt fleece
- Contrast: 250T, 100% nylon taslan

Features:

- Silicone logo label at left arm
- Front zip closure with logo pull
- Abrasion resistant nylon shoulder overlays
- Reflective print on back left shoulder
- Lower reach in kanga pocket
- 3PC Hood with S3 Cord System
- Rib knit waistband and cuffs for shape retention

	S	M	L	XL	2XL
INTERNATIONAL	▪	▪	▪	▪	▪





40100 Dark Shadow



1310152 ESSENTIALS SOFTSHELL JACKET

Fabric Content:

- Shell: 9.4 oz. (320 gsm), 96% polyester / 4% spandex shell bonded with 100% polyester microfleece backing and interior TPU layer
- Storm Blocker™: Water resistant, wind resistant and breathable

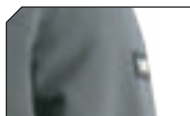
FlexShell: Polyester/spandex soft shell fabric bonded to microfleece using a waterproof, windproof and breathable film. Designed for flexibility in all working conditions.



10158 Black

	S	M	L	XL	2XL
INTERNATIONAL	■	■	■	■	■

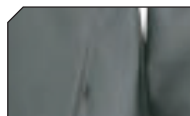
TECHNICAL FEATURES



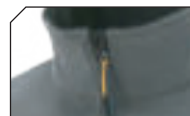
Silicone logo label at left arm.



Contrast yellow chest pocket with logo pull.



Zip closure lower pockets.



Full front zip with interior storm flap and chin guard.



Adjustable hook & loop cuff closure.





Black- 10158



1310112 TRITON JACKET

Fabric Content:

- Shell: 10.8 oz. (366 gsm) 60% cotton / 40% polyester canvas shell with waterproof laminate
- Shell 2: 65% cotton / 33% polyester / 2% elastane twill with 4-way stretch and waterproof laminate
- Elbow overlays: 100% polyester 450D oxford with PU waterproof finish
- Lining: 96% Polyester / 4% Spandex Stretch Woven
- Storm Blocker Plus™: Waterproof, windproof, breathable and seam taped

	M	L	XL	2XL
INTERNATIONAL	▪	▪	▪	▪

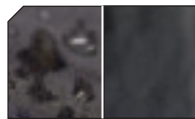
TECHNICAL FEATURES



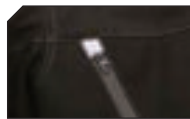
Adjustable cuffs with tab closure and hidden storm cuffs.



Adjustable cord locks at bottom sides for optimal fit.



Windproof fabric with durable water resistant finish giving you full protection.



Full front waterproof zippers with reflective details.



Full front 2-way zippers access lower reach in pockets and open mesh ventilation.



Comfort lined collar with removable hood.





016 -Black

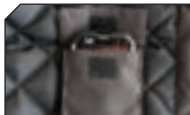
W11432 HEAVY INSULATED PARKA

Fabric Content:

- Shell: 6 oz. (205 gsm), 100% polyester oxford with DWR finish
- Lining: 100% polyester
- Insulation: 6oz. (205 gsm) 100% polyester
- Storm Blocker™: Water resistant, wind resistant and breathable

	M	L	XL	2XL
INTERNATIONAL	▪	▪	▪	▪

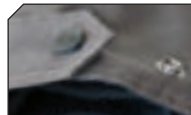
TECHNICAL FEATURES



Interior secure flap cell phone pocket.



Lower microfleece lined side entry handwarmer pockets with layered secure snap flap pockets.



Adjustable cuffs with snap tabs and hidden ribbed storm cuffs.



Adjustable drawcords and cord locks at waist and bottom sides for optimal fit.



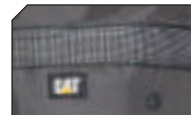
Left shoulder sleeve pocket with secure snap flap closure and side zip entry.



Adjustable snap sleeve cuffs.



Zip-off microfleece lined hood with adjustable drawcord and cord locks.



Reflective webbing on chest and across back.



10401 Khaki



10158 Black



STRETCH

1820034 STRETCH CANVAS UTILITY SHORT

Fabric Content:

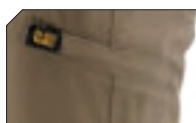
- Canvas: 9 oz. (300 gsm), 60% Cotton / 38% Polyester / 2% Elastane

Fit:

- Slim fit with 9 inch (23cm) inseam
- Belt loops fit a 2.25 inch (57mm) belt

		WAIST						
		30	32	34	36	38	40	42
INSEAM	9"	■	■	■	■	■	■	■

TECHNICAL FEATURES



Secure zip pocket on thigh.



Reinforced belt loops.



629 Dark Earth



1820016

OPERATOR FLEX SHORT

Fabric Content:

- 7.4 oz (250 gsm), 60% cotton / 38% polyester / 2% spandex
- 97% polyester / 3% spandex panels in the crotch gusset

Fit:

- Classic fit with 11 inch (28cm) inseam
- Belt loops fit a 2.25 inch (57mm) belt



016 Black

		WAIST						
		30	32	34	36	38	40	42
INSEAM	11"	■	■	■	■	■	■	■



016 Black



382 Navy



1820028 ELITE OPERATOR FLEX SHORT

Fabric Content:

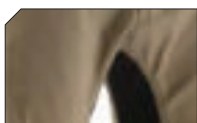
- Self: 7.4 oz. (250 gsm), 60% cotton / 38% polyester / 3% spandex
- Contrast: 97% polyester / 3% spandex

Fit:

- Slim fit with 8 inch (20cm) inseam
- Belt loops fit a 2.25 inch (57mm) belt

		WAIST						
		30	32	34	36	38	40	42
INSEAM	8"	▪	▪	▪	▪	▪	▪	▪

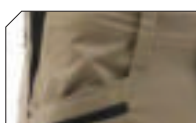
TECHNICAL FEATURES



Rectangle shaped crotch gusset adds to comfort and ease of movement.



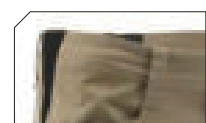
Action Zip Pocket.



Front Slash Pockets with Logo Metal Rivet.



Belled Side Cargo Pocket with Secure Flap Closure and Layered Multipurpose Pockets.



Side Waist Stretch Panel Gussets.



10934 Dark Shadow-Black



1820033 TRADE DWR STRETCH SHORT

Fabric Content:

- Self: 7.4 oz. (250 gsm), 65% cotton / 33% polyester / 2% spandex twill with water resistant coating
- Contrast: 100% nylon oxford

Fit:

- Slim fit with 9.5 inch (24cm) inseam
- Belt loops fit a 2.25 inch (57mm) belt



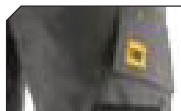
12195 Black-Black

INSEAM	WAIST						
	30	32	34	36	38	40	42
9.5"	■	■	■	■	■	■	■

TECHNICAL FEATURES



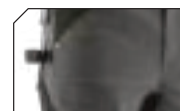
Diamond shaped crotch gusset adds to comfort and ease of movement.



Side cargo pocket with secure closure, stacked pockets and logo silicone label.



Rear pockets are cut away from garment.



Carpenter loop on right hip.



Cell phone pocket on right thigh with hook and loop closure.



Cat Yellow rivet on right pocket.



Extra wide center back belt loop with silicone logo label.



40100 Dark shadow

1820032 STRETCH TRACKER SHORT

FEATURES:

- Logo Label on Left Cargo Pocket and Center Back Belt Loop
- Front Slash Pockets with Logo Metal Rivet
- Tool Pocket on Back Right Thigh
- Left Side Cargo Pocket with Hook and Loop Closure and Molle System Webbing
- Reinforced Back Patch Pockets

 STRETCH



10158 Black

FIT:

Straight Fit with 11in (28cm) Inseam

FABRIC:

Twill, 65% Polyester, 33% Cotton, 2% Elastane, 7.4oz (250GSM)

		WAIST						
		30	32	34	36	38	40	42
INSEAM	11"	▪	▪	▪	▪	▪	▪	▪

BOTT

BOTTOMS





016 Black



382 Navy



1810038 OPERATOR FLEX TROUSER

Fabric Content:

- 7.4 oz. (250 gsm), 60% cotton / 38% polyester / 2% spandex twill
- 97% polyester / 3% spandex panels in the crotch gusset and behind knees

Fit:

- Active fit with 17" (43cm) leg opening to fit over boot
- Belt loops fit a 2.25 inch (57mm) belt

		WAIST					
INSE AM	30	32	34	36	38	40	42
32	■	■	■	■	■	■	■

EXPANDED SIZE OFFERING

TECHNICAL FEATURES

ALL COLORS NOT AVAILABLE IN ALL SIZES*



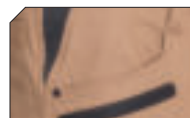
Stretch panels in back of knees for added comfort and range of motion.



Rectangle shaped crotch gusset for ease of movement.



Action zip pocket for a secure closure.



Front slash pockets with logo metal rivet.



Belloved side cargo pocket with secure flap closure and layered multipurpose pockets.



Side waist stretch panel gussets for added comfort and range of motion.



11110 Black-Dark Shadow

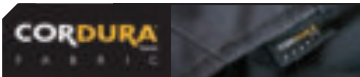


10934
Dark Shadow-Black



2-WAY STRETCH

1810083 ESSENTIALS STRETCH CARGO TROUSER



Contrast CORDURA® fabric on knees to increase the life of the pant.

Fabric Content:

- Self: 7.2 oz. (245 gsm), 65% cotton / 33% polyester / 2% spandex twill
- Contrast: 6.6 oz. (225 gsm), 100% nylon oxford CORDURA®

Fit:

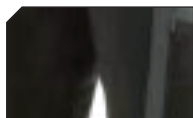
- Slim fit with 15 inch (38cm) leg opening
- Belt loops fit a 2.25 inch (57mm) belt

		WAIST						
INSEAM		28	32	34	36	38	40	42
32		■	■	■	■	■	■	■
34				■	■	■	■	■

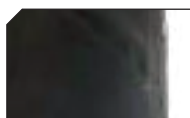
TECHNICAL FEATURES



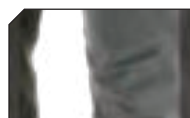
Silicone logo label on left thigh.



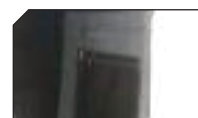
Slim cut fit with diamond crotch gusset.



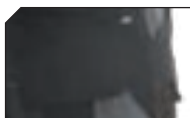
Front slash pockets with logo metal rivet.



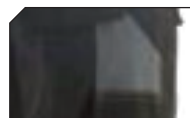
Durable abrasion resistant oxford overlays at knees.



Easy access stacked side pockets with zip closure.



Rear pockets are cut away from the garment for comfort and ease of movement.



Back right ruler pocket.



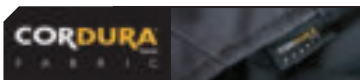
11110 Black-Dark Shadow



10934
Dark Shadow-Black



1810084 ESSENTIALS STRETCH KNEE POCKET TROUSER



Contrast CORDURA® fabric on knees to increase the life of the pant.

Fabric Content:

- Self: 7.2 oz. (245 gsm), 65% cotton / 33% polyester / 2% spandex twill
- Contrast: 6.6 oz. (225 gsm), 100% nylon oxford CORDURA®

Fit:

- Slim fit with 15 inch (38cm) leg opening
- Belt loops fit a 2.25 inch (57mm) belt



CW91 KNEE PADS

Certifications:

- EN 14404 certified: Level 0, Type 2



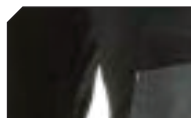
555
Yellow

INSEAM	WAIST						
	28	32	34	36	38	40	42
32	■	■	■	■	■	■	■
34			■	■	■	■	

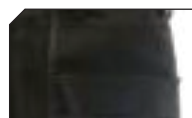
TECHNICAL FEATURES



Silicone logo label on left thigh.



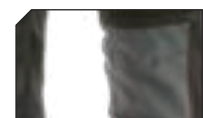
Slim cut fit with diamond crotch gusset.



Front slash pockets with logo metal rivet.



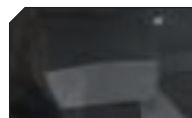
Pull out tool pockets in durable oxford.



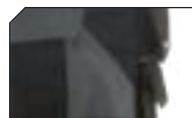
Durable abrasion resistant oxford pockets at knees for kneepads.



Easy access stacked side pockets with zip closure.



Rear pockets are cut away from the garment for comfort and ease of movement.



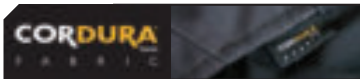
Back right ruler pocket.



12195 Black-Black



1810098 TRADE DWR STRETCH TROUSER



Contrast CORDURA® fabric on knees to increase the life of the pant.

Fabric Content:

- Self: 7.4 oz. (250 gsm), 65% cotton / 33% polyester / 2% spandex twill with water resistant coating
- Contrast 1: 100% nylon oxford CORDURA®
- Contrast 2: 100% nylon oxford

Fit:

- Slim fit with 15 inch (38cm) leg opening
- Belt loops fit a 2.25 inch (57mm) belt



CW91 KNEE PADS

Certifications:

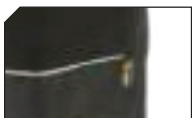
- EN 14404 certified: Level 0, Type 2



555
Yellow

INSEAM	WAIST				
	32	34	36	38	40
32	■	■	■	■	■
34			■	■	■

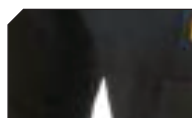
TECHNICAL FEATURES



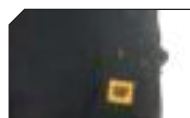
Durable abrasion resistant CORDURA® knee pad pockets.



Reflective piping at front and back knee.



Diamond shaped crotch gusset adds to comfort and ease of movement.



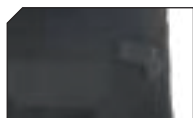
Side cargo pocket with secure closure and stacked pockets.



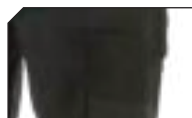
Rear pockets are cut away from garment.



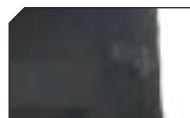
Extra wide center back belt loop.



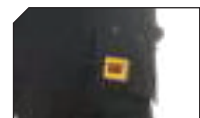
Carpenter loop on right hip.



Cell phone pocket on right thigh with hook and loop closure.



Cat Yellow rivet on right pocket.



Silicone logo label on left cargo flap and center back belt loop.



10401 Khaki



10158 Black



STRETCH

1810103 STRETCH CANVAS UTILITY PANT

Fabric Content:

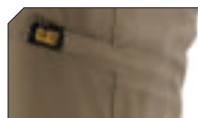
- Canvas: 9 oz. (300gsm), 60% Cotton 38% Polyester 2% Elastane

Fit:

- Straight fit through hip and thigh with tapered leg opening
- 15 inch (38cm) leg opening
- Belt loops fit a 2.25 inch (57mm) belt

INSEAM	WAIST					
	30	32	34	36	38	40
32	▪	▪	▪	▪	▪	▪
34	▪	▪	▪	▪	▪	▪

TECHNICAL FEATURES



Secure zip pocket on thigh.



Articulated knees.



Reinforced belt loops.



12269 Dark Stone

1810093 TRADE DENIM WORK JEAN

Fabric Content:

- Self: Denim, 99% Cotton/1% Spandex, 12oz (405GSM)
- Contrast: Rib Knit, 97% Polyester/3% Spandex, 8.9oz (300GSM)

Fit:

- Slim Fit, Tapered Leg with 13in (33cm) Leg Opening

		WAIST					
INSEAM	30	32	34	36	38	40	
32	■	■	■	■	■	■	



10158 Black



CW91 KNEE PADS



555 Yellow

1810086 ADVANCED STRETCH TRADEMARK PANT

Fabric Content:

- Self: 8.8 oz. (300 gsm), 60% cotton / 38% polyester / 2% elastane canvas
- Contrast 1: 900D 100% polyester oxford overlays
- Contrast 2: 5 oz. (170 gsm), 88% nylon / 12% spandex textured stretch

Fit:

- Slim fit with 15 inch (38cm) leg opening
- Belt loops fit a 2.25 inch (57mm) belt

ACTIVE SLIM FIT INSEAM	WAIST						
	30	32	34	36	38	40	42
32	■	■	■	■	■	■	■
34				■	■	■	■

ALL COLORS NOT AVAILABLE IN ALL SIZES*

TECHNICAL FEATURES



Articulated knee overlays with stretch contrast behind the knee for all-day comfort.



Diamond shaped crotch gusset adds to comfort and ease of movement.



Side Cargo Pocket with Secure Closure and Stacked Pockets.



Rear Pockets are Cut Away From Garment.



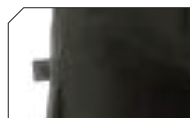
Extended Coverage at back waist with extra wide center back belt loop.



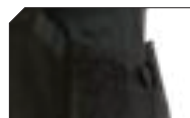
Contrast Inside Waistband with Gripper Tape.



Oxford Reinforced Front Reach in Pockets.



Carpenter Loop on Right Hip.



Pull Out Tool Pockets.



Scuff Guards in Durable Abrasion Resistant Oxford.



W01700

TRADEMARK FLEXFIT CAP (CARRY OVER)

FLEXFIT



Black - 036

Night Camo - 11790

FABRIC: Twill, 97% Cotton, 3% Spandex

FIT / SIZE: Mid-Profile / S/M:L/XL

FEATURES: Embroidered Logo at Center Front, Logo Label at Center Back, Curved Bill, Moisture Wicking Stretch Sweatband, Fully Fitted

1120254

DESIGN MARK DIESEL CAP (CARRY OVER)

110 FLEXFIT



Black - 11250

Woodland Camo - 11260

FABRIC: Solid Front: Twill, 63% Polyester, 34% Cotton, 3% PU Spandex

Camo Front: Twill, 70% Polyester, 30% Cotton, Back: Mesh, 95% Polyester, 5% PU Spandex

FIT / SIZE: Mid-Profile / OS

FEATURES: Embroidered Logo Patch at Center Front, Curved Bill, Moisture Wicking Stretch Sweatband, Snap Back Closure to Fit a Wide Array of Sizes

1090020

CAT EQUIPMENT 110 CAP

110 FLEXFIT

NEW



Black - 10158

Chive - 12360

FABRIC: Twill, Non-Spandex Secondary: Mesh, Poly-Spandex

FIT / SIZE: High Profile / OS

FEATURES: Logo Embroidered Patch on Front Panels, Curved Bill, Moisture Wicking Stretch Sweatband, Logo Label Above Back Closure, Snap Back Closure to Fit a Wide Array of Sizes to Fit a Wide Array of Sizes

1090034

CAT PATCH CAP

NEW



Chive - 12369

Monument - 10305

Black - 10158

FABRIC: Twill, 100% Cotton

FIT / SIZE: High Profile / OS

FEATURES: Center Front Silicone Logo Label, Curved Bill, Snap Back Closure to Fit a Wide Array of Sizes

CAP

1090031

**LOGO LABEL
UNSTRUCTURED CAP**

NEW



Black - 10158

Bronze - 11768

FABRIC: Twill, 100% Cotton

FIT / SIZE: Low Profile / OS

FEATURES: Silicone Logo Label at Center Front, Curved Bill, Moisture Wicking Sweatband, Snap Back Closure to Fit a Wide Array of Sizes

1090002

RETRO DIESEL POWER CAP



Black - 10158

Yellow - 10937

FABRIC: Front: Twill, 60% Cotton, 40% Polyester, Back: Mesh, 100% Polyester

FIT / SIZE: High Profile / OS

FEATURES: Embroidered Logo Patch at Center Front, Hybrid Curve Bill, Snap Back Closure to Fit a Wide Array of Sizes



1090026

CAT LABEL CUFF BEANIE

Disponibile da
Settembre 2023



Army Moss - 10639



Coffee Bean - 12355



Dark Heather Grey - 10123



Detroit Blue - 10118



Black - 10158



Woodland Camo - 11093

NEW COLOR

FABRIC: 1X1 Rib Knit, 100% Acrylic
FIT / SIZE: Classic Fit / OS

FEATURES: Logo Label at Center Front,
Extended Cuff, Shaped Crown with Darts

1120117

TRADEMARK CUFF BEANIE

Disponibile da
Settembre 2023




Black - 016

FABRIC: Solid: Knit, 95% Acrylic, 5% Spandex, Heather: Knit, 47% Acrylic, 47% Polyester, 6% Spandex

FIT / SIZE: Classic Fit / OS

FEATURES: Embroidered Logo on Front Cuff, Shaped Crown with Darts



Backed by the strength of Wolverine World Wide Inc.

- Wolverine Worldwide is the third largest footwear manufacturer in the world.
- Wolverine Worldwide has a diverse portfolio of 14 brands: Merrell, Sperry Top-Sider, Hush Puppies, Saucony, Wolverine, Wolverine Leathers, Keds, Cat, Stride Rite, Chaco, Bates, Hystest, Soft Style, Harley-Davidson.
- Wolverine Worldwide distributes more than 100 million units of footwear and apparel in 200 countries.

Caterpillar: Global Power Brand

- 3+ million Caterpillar products at work around the world.
- \$53.8 billion in sales and revenues for 2019.
- World's leading manufacturer of construction and mining equipment, diesel and natural gas engines, industrial gas turbines and diesel-electric locomotives.

A yellow Caterpillar bulldozer is shown in a desert landscape. The bulldozer is in the foreground, with its front grille and headlights visible. The word "CATERPILLAR" is partially visible on the side of the machine. The background shows a vast, arid desert with rolling hills under a clear sky.

Industry Leading Footwear

- Hugely experienced. +100 million pairs of footwear supplied to consumers across 150 countries.
- Trailblazing technologies that address the most challenging industrial environments on earth.
- Globally recognised as delivering exceptional value through enhanced durability and performance.

Consumer Connection

- Market leading brand, associated with ruggedness, toughness and durability.
- Trusted by veteran workers, while connecting with a new generation through product solutions that meet their individual needs and preferences.



INDUSTRIAL

"I'M ON MY FEET ALL DAY, BOTH INDOORS AND OUTDOORS. I'M REQUIRED TO WEAR SAFETY FOOTWEAR BUT AM UNWILLING TO BE UNCOMFORTABLE."

OCCUPATIONS

Shipping / Receiving
Carpentry
Construction
Electrical Engineering
Equipment Operator
Agriculture
Manufacturing
Mechanic
Tradesman
Warehousing
Worksite Manager

FOOTWEAR REQUIREMENTS

Abrasion Resistance
Durability
Flexibility
Insulation
Puncture Resistance
Oil Resistance
Slip Resistance
Traction
Waterproof
Safety Toe
Non Metallic

LIGHT INDUSTRIAL

"I WORK MOSTLY INDOORS AND NEED MY FOOTWEAR TO BE LIGHTWEIGHT, COMFORTABLE AND FLEXIBLE AND WORK FOR MY WEEKEND PROJECTS TOO."

OCCUPATIONS

Duty / Security
Airport (inside)
Food Services
Warehouse
Transportation
Delivery
Handyman
General Contractor
Security

FOOTWEAR REQUIREMENTS

Flexibility
Lightweight
Slip-Resistance
Non Metallic
Traction

ELMORE LO

ST S1 P HRO SRC



ELMORE LO ST S1 P HRO SRC



BLACK
P725317

INDUSTRIAL | S1 P

FEATURES & BENEFITS

FOOTBED:	REMOVABLE PU
FOOTBED LINING:	MESH
MIDSOLE:	EVA
CONSTRUCTION:	CEMENTED
AVAILABLE SIZES:	UK 3-13





CATERPILLAR

CATERPILLAR

CAT



POWERPLANT ST S3 HRO SRA



HONEY RESET

P724626
Nubuck



BLACK

P724623
Waxed Full Grain Leather



BROWN

P724629
Waxed Full Grain Leather

INDUSTRIAL | S3

FEATURES & BENEFITS

FOOTBED: REMOVABLE PU
FOOTBED LINING: MESH
MIDSOLE: PVC
CONSTRUCTION: GOODYEAR WELTED
AVAILABLE SIZES: UK 6-13





STRIVER BUMP ST S3 SRC



BROWN
P725098
Waxed Full Grain Leather

INDUSTRIAL | S3

FEATURES & BENEFITS

FOOTBED:	REMOVABLE PU
FOOTBED LINING:	MESH
MIDSOLE:	PU
CONSTRUCTION:	INJECTION
AVAILABLE SIZES:	UK 4-14



CATALOGUE ICONOGRAPHY



EASE is a lightweight, custom engineered foam, proprietary to Cat Footwear. Compared to regular EVA and foam, EASE provides:

- 30% greater longevity by taking 30% less compression - it won't break down or compress
- 30% more energy return - giving you more bounce back
- Lightweight comfort - 10-15% lighter



Athletic inspired design, construction and engineering. ERGOLite is made for the worker who is required to wear safety footwear, but wants anything but.



A one-of-a-kind sole that delivers unsurpassed traction and makes ice obsolete so that you're sure-footed and moving forward when the temperature drops. Improves traction on wet, icy surfaces by 3x.



Powered by DUOFUSE™: Our custom engineered midsole blends rubber & foam for more comfort, less weight and trusted durability. With 40% more resilience and 30% more abrasion resistance than standard EVA it will stay comfortable while holding up to the daily beating they're going to receive.



Powered by SRX: our extreme slip resistant compound maximizes grip and traction to exceed global industry standards.



Faster. Thinner. Stronger. Nano Toe is a non metallic approved safety toe that is 40% lighter than steel and 15% lighter than composite toes, providing more space and comfort for your toes without sacrificing any protection.



iTechnology combines the durability of a Goodyear Welt with an athletic cup heel for athletic shoe comfort.

Cat Footwear manufactures premium, safety footwear symbolizing a 100-year connection Caterpillar has to tough, honest work. Our safety footwear collection includes a variety of comfort, durability, safety and technology features intended to keep workers protected and comfortable in the harshest of conditions.

EN

Our safety footwear is tested to meet and exceed strict EU standards from authorized testing facilities such as SATRA and receives certification in one of the following categories:

**EN ISO
20345:2011**

SAFETY FOOTWEAR CLASSIFICATION

SB

Footwear includes an internal steel toecap tested to 200-joule compression

S1 P

Footwear includes an internal steel toecap tested to 200-joule compression and anti-static properties of electrical resistance no greater than 100k Mega ohms and steel midsole plate for nail penetration resistance of sole at no less than 1100 N

S3

Footwear includes an internal steel toecap tested to 200-joule compression, water resistant leather and steel midsole plate for nail penetration resistance of sole at no less than 1100 N

SB P

Footwear includes an internal steel toecap tested to 200-joule compression and steel midsole plate for nail penetration resistance of sole at no less than 1100 N

Cat[®] bags
& luggage

SS23



The CAT logo is displayed in black on a yellow square background in the top right corner of the image.



Cat® Bags & Luggage SS23

City Adventure



NEW STYLE

CITY ADVENTURE Backpack

SKU no. 84353



DIMENSIONS

H x W x D: 45 x 31 x 23 cm

Volume: 23 ltr.

Weight: 0.42 kg

Material: 600D rPET

PRODUCT FEATURES

- / Main compartment with padded laptop slip pocket
- / Padded shoulder straps and back panel
- / Front pocket with key ring attachment string
- / Reflective logo print



01
Black



351
Army Green

CITY ADVENTURE Waist Bag

SKU no. 84354



DIMENSIONS

H x W x D : 10.5 x 32.5 x 9 cm

Volume: 1.5 ltr.

Weight: 0.168 kg

Material: 600D rPET

PRODUCT FEATURES

- / Main compartment with inside zipper pocket and key ring attachment strap
- / Hidden zipper pocket at back panel
- / Adjustable waist belt length and buckle closure
- / Reflective logo print



01
Black

351
Army Green



Cat® Bags & Luggage SS23

Millennial Classic

CAT®

MILLENNIAL CLASSIC

Barry Backpack

SKU no. 84055

DIMENSIONS

H x W x D: 47 x 33 x 33 cm

Volume: 31 ltr.

Weight: 0.655 kg

Material: 600D high density polyester (100%)



PRODUCT FEATURES

- / Back zipper padded laptop or document pocket for quick access
- / Air mesh padded back panel
- / Padded air mesh shoulder straps with length adjustment
- / Detachable sternum straps with adjustability
- / Front pocket with slip pocket, pen loop and key ring attachment

147
Camouflage
AOP

NEW COLOR

MILLENNIAL CLASSIC

Benji Backpack

SKU no. 84056

DIMENSIONS

H x W x D: 45 x 30 x 15 cm

Volume: 20 ltr.

Weight: 0.37 kg

Material: 600D high density polyester (100%)



PRODUCT FEATURES

- / Organizer panel with detachable keychain
- / Inside zipper pocket
- / Mesh side pockets



147
Camouflage
AOP

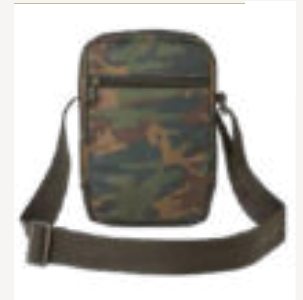
NEW COLOR

478
Black Heat
Embossed

MILLENNIAL CLASSIC

Rodney Mini Shoulder Bag

SKU no. 84059



DIMENSIONS

H x W x D: 22 x 15 x 4 cm

Volume: 1.5 ltr.

Weight: 0.2 kg

Material: 600D high density polyester (100%)

PRODUCT FEATURES

- / Padded mini-tablet compartment
- / Flat zipper pocket on front panel
- / Flat zipper pocket on back panel



147
Camouflage
AOP

NEW COLOR



478
Black Heat
Embossed

MILLENNIAL CLASSIC

Raymond Waist Bag

SKU no. 84062



DIMENSIONS

H x W x D: 15 x 26.5 x 12 cm

Volume: 2 ltr.

Weight: 0.2 kg.

Material: 600D high density polyester (100%)

PRODUCT FEATURES

- / Hidden flat zipper pocket on back panel
- / Detachable keychain
- / Two main compartments with zipper closure



147
Camouflage
AOP

478
Black Heat
Embossed

NEW COLOR



Cat® Bags & Luggage SS23

Combat



COMBAT

Tabernas Sling Bag

SKU no. 84174

DIMENSIONS

H x W x D: 35 x 10.5 x 25 cm

Volume: 9 ltr.

Weight: 0.54 kg

Material: 1680D Polyester (100%)



501
Dark Anthracite

PRODUCT FEATURES

- / Elastic front cord and webbing loops
- / Front pocket with key ring string
- / Main compartment with flat back panel slip pocket
- / Adjustable and airmesh padded shoulder strap
- / Suitable for left and right shoulder with moveable strap buckle

COMBAT

Antarctic Duffel M

SKU no. 84161

DIMENSIONS

H x W x D: 34 x 61 x 37 cm

Volume: 55 ltr.

Weight: 0.71 kg

Material: 1680D Polyester (100%)



501
Dark Anthracite

PRODUCT FEATURES

- / Spacious main compartment
- / Front zipper pocket
- / DNA V-belt rubber strong
- / Adjustable shoulder strap
- / Carry handle loops





Distributore per l'Italia

Gartner trade srl - Sede operativa - Zona artigianale 6 - 39040 Campo di Trens - Bolzano - Italy
Phone +39 0472 270777 - E-mail: info@gartnertrade.it